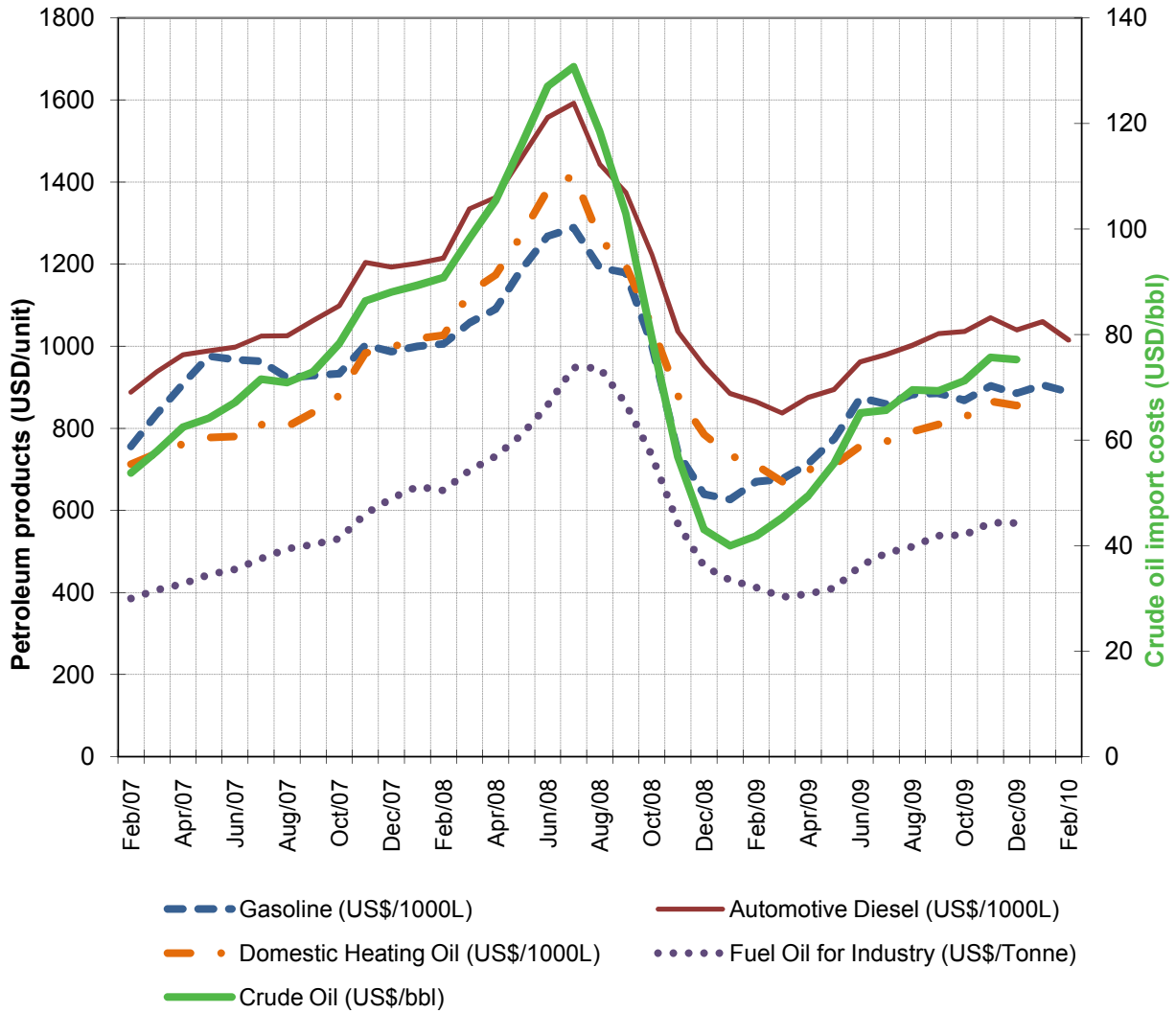


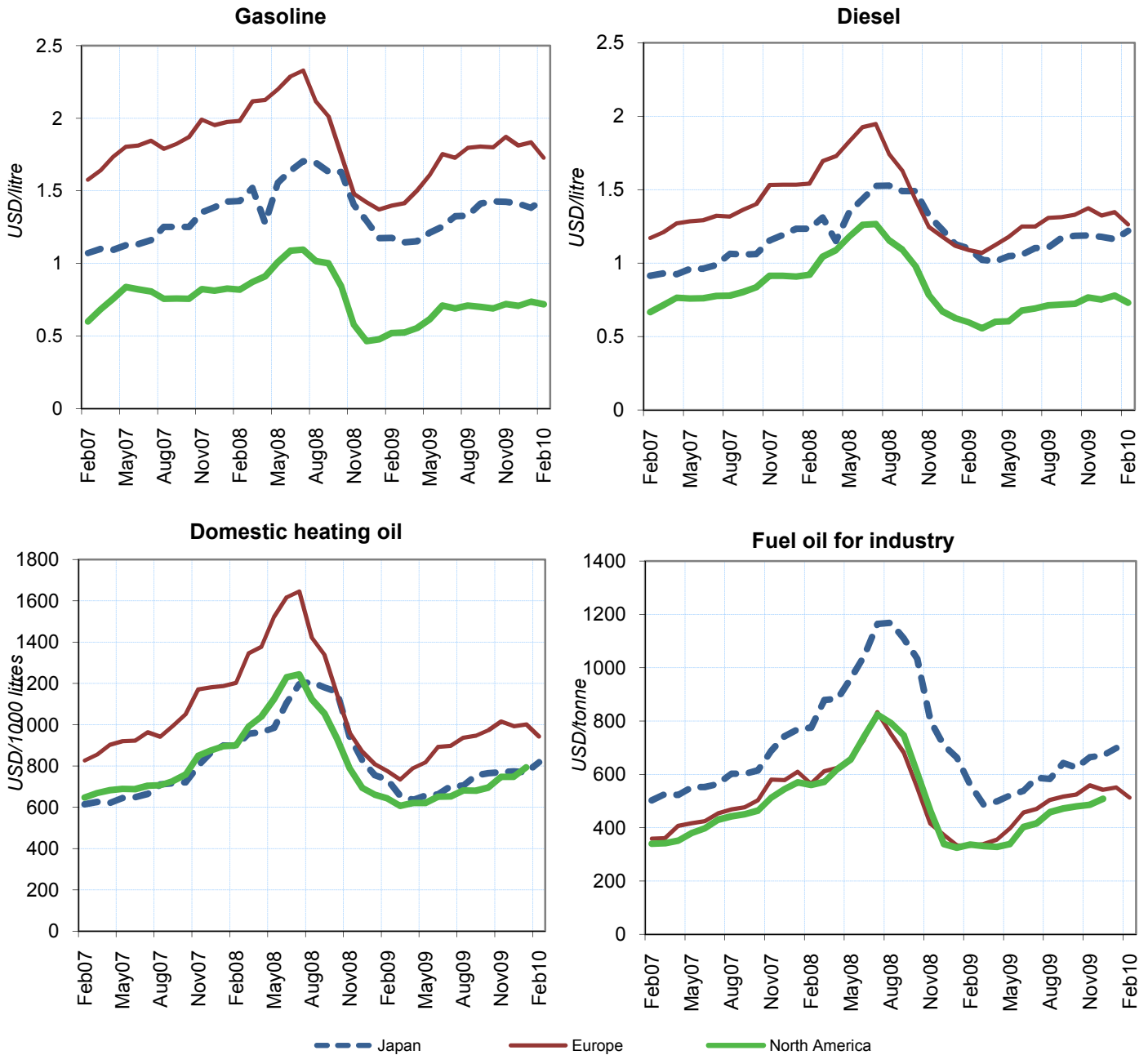
International Energy Agency
 L'Agence internationale de l'énergie
 9, rue de la Fédération, 75739 PARIS CEDEX 15 FRANCE
 prices@iea.org



* Weighted average price including taxes using current exchange rates for France, Germany, Italy, Spain, UK, Japan, Canada and USA.

For the two most recent months, consumption is estimated based on the previous year.

End-use prices for petroleum products *



* Europe includes France, Germany, Italy, Spain and the United Kingdom; North America includes the United States and Canada. Weighted average price including taxes. For the two most recent months, consumption is estimated based on the previous year.

Average end-use prices *

	NATIONAL CURRENCY *						US DOLLARS					
	Total Price	% change from		Ex-Tax Price	% change from		Total Price	% change from		Ex-Tax Price	% change from	
		Jan-10	Feb-09		Jan-10	Feb-09		Jan-10	Feb-09		Jan-10	Feb-09
Gasoline ¹ (Price per litre)												
France	1.299	0.7	14.2	0.480	1.5	39.1	1.764	-4.3	21.1	0.652	-3.5	47.5
Germany	1.317	-2.5	12.6	0.452	-5.8	37.8	1.789	-7.3	19.4	0.614	-10.5	46.1
Italy	1.313	0.3	15.1	0.530	0.6	37.0	1.783	-4.6	22.0	0.720	-4.4	45.2
Spain	1.103	0.1	21.3	0.514	0.2	36.3	1.498	-4.8	28.7	0.698	-4.7	44.6
UK	1.119	0.9	24.9	0.390	2.1	52.9	1.684	-6.1	30.5	0.587	-5.0	59.8
Japan	128.9	2.3	18.3	67.0	4.4	39.6	1.442	4.2	22.7	0.749	6.3	44.9
Canada	0.996	-1.6	16.5	0.677	-2.2	23.8	0.965	-0.5	40.5	0.656	-1.1	49.3
USA	0.699	-2.6	37.6	0.593	-3.1	47.5	0.699	-2.6	37.6	0.593	-3.1	47.5
Automotive diesel for commercial use ² (Price per litre)												
France	0.896	-0.6	9.9	0.468	-1.1	20.9	1.217	-5.4	16.6	0.636	-5.9	28.2
Germany	0.929	-2.9	7.4	0.459	-5.7	16.2	1.262	-7.7	13.9	0.623	-10.4	23.2
Italy	0.952	-0.5	7.6	0.529	-0.9	15.8	1.293	-5.4	14.1	0.718	-5.8	22.7
Spain	0.856	-0.6	14.7	0.516	-1.0	18.6	1.163	-5.5	21.7	0.701	-5.8	25.8
UK	0.966	0.7	10.5	0.404	1.8	15.4	1.454	-6.3	15.4	0.608	-5.3	20.6
Japan	109.0	2.9	7.0	71.2	4.2	10.4	1.219	4.9	11.0	0.796	6.2	14.6
Canada	0.964	-2.8	10.0	0.714	-3.6	12.8	0.934	-1.8	32.7	0.692	-2.6	36.0
USA	0.699	-7.0	20.5	0.574	-8.5	25.9	0.699	-7.0	20.5	0.574	-8.5	25.9
Domestic heating oil (Price per 1000 litres)												
France	654.98	-1.8	14.7	491.04	-2.0	16.7	889.6	-6.7	21.6	666.9	-6.9	23.7
Germany	621.32	-1.4	16.9	460.77	-1.6	19.6	843.8	-6.3	24.0	625.8	-6.4	26.8
Italy	1114.43	-0.7	10.2	525.48	-1.3	19.5	1513.6	-5.6	16.8	713.7	-6.1	26.7
Spain	618.80	-1.3	17.5	447.30	-1.5	21.6	840.4	-6.2	24.6	607.5	-6.4	28.9
UK	494.48	-2.4	20.1	362.93	-3.1	24.6	744.1	-9.2	25.5	546.2	-9.9	30.1
Japan ³	73222	4.5	7.5	67695	4.7	7.7	818.7	6.5	11.6	756.9	6.6	11.8
Canada	892.75	-0.4	17.9	826.24	-0.4	18.6	865.4	0.7	42.1	800.9	0.6	43.1
USA
Low sulphur fuel oil for industry ² (Price per metric ton)												
France	385.09	-1.6	53.7	366.59	-1.7	58.0	523.0	-6.5	63.0	497.9	-6.5	67.5
Germany	332.61	-3.3	42.8	307.61	-3.5	47.9	451.7	-8.0	51.4	417.8	-8.3	56.8
Italy	411.27	-0.6	44.8	379.88	-0.7	50.4	558.6	-5.5	53.5	515.9	-5.6	59.5
Spain	395.02	1.7	45.1	379.96	1.8	47.7	536.5	-3.3	53.9	516.0	-3.2	56.6
UK
Japan
Canada
USA

¹ Unleaded premium (95 RON) for France, Germany, Italy, Spain, UK; regular unleaded for Canada, Japan and the United States.

² VAT excluded from prices for automotive diesel and low sulphur fuel oil when refunded to industry.

³ Kerosene for Japan.

* Prices for France, Germany, Italy and Spain are in Euro; UK in British Pounds, Japan in Yen, Canada in Canadian Dollars.

Average end-use prices *

	Mar09	Apr09	May09	Jun09	Jul09	Aug09	Sep09	Oct09	Nov09	Dec09	Jan10	Feb10
Gasoline ¹ (Price per Litre)												
France	1.131	1.168	1.200	1.263	1.232	1.267	1.247	1.228	1.268	1.255	1.290	1.299
Germany	1.165	1.225	1.263	1.336	1.284	1.335	1.307	1.292	1.316	1.299	1.351	1.317
Italy	1.162	1.189	1.228	1.296	1.270	1.297	1.276	1.256	1.289	1.278	1.309	1.313
Spain	0.907	0.948	0.977	1.035	1.049	1.092	1.064	1.045	1.074	1.068	1.102	1.103
UK	0.903	0.942	0.972	1.012	1.026	1.035	1.061	1.053	1.086	1.081	1.109	1.119
Japan	111.9	113.9	117.0	121.0	125.0	126.0	128.9	128.9	126.9	126.9	126.0	128.9
Canada	0.878	0.887	0.960	1.024	0.983	1.011	0.998	0.968	1.007	0.965	1.012	0.996
USA	0.512	0.541	0.599	0.694	0.674	0.691	0.682	0.671	0.702	0.690	0.718	0.699
Automotive diesel for commercial use ² (Price per litre)												
France	0.785	0.812	0.811	0.845	0.838	0.864	0.856	0.853	0.879	0.873	0.901	0.896
Germany	0.830	0.871	0.882	0.906	0.892	0.933	0.916	0.922	0.931	0.920	0.957	0.929
Italy	0.856	0.871	0.885	0.913	0.907	0.932	0.916	0.912	0.937	0.932	0.957	0.952
Spain	0.722	0.744	0.750	0.780	0.798	0.831	0.816	0.813	0.836	0.832	0.861	0.856
UK	0.870	0.891	0.898	0.906	0.901	0.906	0.928	0.925	0.954	0.952	0.959	0.966
Japan	99.9	99.9	101.0	101.9	103.9	105.0	107.0	107.0	105.9	105.9	105.9	109.0
Canada	0.817	0.858	0.823	0.881	0.901	0.914	0.918	0.915	0.971	0.953	0.992	0.964
USA	0.544	0.587	0.588	0.663	0.675	0.693	0.699	0.702	0.739	0.727	0.752	0.699
Domestic heating oil (Price per 1000 litres)												
France	517.75	538.36	533.48	569.65	567.77	596.70	586.17	590.53	621.05	622.37	667.20	654.98
Germany	499.23	531.50	523.87	562.87	556.00	591.41	573.06	588.80	605.58	596.01	630.19	621.32
Italy	983.41	1010.70	1005.18	1047.08	1044.11	1072.20	1054.62	1055.56	1086.06	1085.39	1122.58	1114.43
Spain	487.06	517.15	520.70	557.24	558.75	585.24	580.42	570.60	601.10	597.68	627.19	618.80
UK	388.37	427.55	417.38	439.23	435.82	459.62	460.65	473.57	482.81	486.18	506.65	494.48
Japan ³	64222	63000	63444	64055	66278	66945	69000	69111	68723	69666	70056	73222
Canada	715.75	758.80	735.75	770.75	773.20	789.25	782.75	796.20	863.25	865.20	896.50	892.75
USA	612.60	621.90	619.20	647.00	647.80	676.00	674.40	687.60	737.00	736.50	783.80	..
Low sulphur fuel oil for industry ³ (Price per metric ton)												
France	248.55	269.90	298.01	340.02	336.19	365.96	358.51	351.59	379.54	372.16	391.43	385.09
Germany	229.15	239.42	256.78	295.03	299.96	321.36	326.85	329.73	351.05	351.67	343.79	332.61
Italy	285.63	298.26	322.51	357.19	362.48	382.02	379.28	374.82	399.49	395.21	413.96	411.27
Spain	273.61	285.43	305.68	326.83	341.58	360.40	364.29	363.68	383.29	380.90	388.47	395.02
UK
Japan	47619	49275	50359	52017	55333	55355	58671	56461	59223	60340	63656	..
Canada
USA	330.89	328.37	339.28	402.77	416.19	458.99	472.41	480.25	486.40	508.50

¹ Unleaded premium (95 RON) for France, Germany, Italy, Spain, UK; regular unleaded for Canada, Japan and the United States.

² VAT excluded from prices for automotive diesel and low sulphur fuel oil when refunded to industry.

³ Kerosene for Japan.

* Prices for France, Germany, Italy and Spain are in Euro; UK in British Pounds, Japan in Yen, Canada in Canadian Dollars

Average end-use taxes *

	Mar09	Apr09	May09	Jun09	Jul09	Aug09	Sep09	Oct09	Nov09	Dec09	Jan10	Feb10
Gasoline ¹ (Tax per litre)												
France	0.791	0.797	0.803	0.813	0.808	0.814	0.810	0.807	0.814	0.812	0.817	0.819
Germany	0.841	0.851	0.857	0.868	0.860	0.868	0.864	0.861	0.865	0.862	0.871	0.865
Italy	0.758	0.762	0.769	0.780	0.776	0.780	0.777	0.773	0.779	0.777	0.782	0.783
Spain	0.532	0.538	0.542	0.550	0.581	0.588	0.584	0.581	0.585	0.584	0.589	0.589
UK	0.642	0.665	0.669	0.674	0.676	0.677	0.695	0.699	0.704	0.703	0.727	0.729
Japan	61.1	61.2	61.4	61.6	61.8	61.8	61.9	61.9	61.8	61.8	61.8	61.9
Canada	0.309	0.312	0.316	0.319	0.319	0.320	0.320	0.318	0.320	0.318	0.320	0.319
USA	0.106	0.106	0.106	0.106	0.106	0.106	0.106	0.106	0.106	0.106	0.106	0.106
Automotive diesel ² (Tax per litre)												
France	0.428	0.428	0.428	0.428	0.428	0.428	0.428	0.428	0.428	0.428	0.428	0.428
Germany	0.470	0.470	0.470	0.470	0.470	0.470	0.470	0.470	0.470	0.470	0.470	0.470
Italy	0.428	0.423	0.423	0.423	0.423	0.423	0.423	0.423	0.423	0.423	0.423	0.423
Spain	0.311	0.311	0.311	0.311	0.340	0.340	0.340	0.340	0.340	0.340	0.340	0.340
UK	0.524	0.542	0.542	0.542	0.542	0.542	0.557	0.562	0.562	0.562	0.562	0.562
Japan	37.3	37.3	37.4	37.4	37.5	37.6	37.7	37.7	37.6	37.6	37.6	37.8
Canada	0.240	0.243	0.241	0.244	0.247	0.248	0.248	0.248	0.250	0.249	0.251	0.250
USA	0.124	0.124	0.124	0.124	0.125	0.125	0.125	0.125	0.125	0.125	0.125	0.125
Domestic heating oil (Tax per 1000 litres)												
France	141.45	144.83	144.03	149.95	149.65	154.39	152.66	153.38	158.38	158.59	165.94	163.94
Germany	141.06	146.21	144.99	151.22	150.12	155.78	152.85	155.36	158.04	156.51	161.97	160.55
Italy	567.11	571.66	570.74	577.72	577.23	581.91	578.98	579.14	584.22	584.11	590.31	588.95
Spain	153.42	157.41	157.63	162.67	162.40	166.07	165.39	164.72	168.67	168.56	172.95	171.50
UK	119.19	124.56	124.08	125.12	124.95	126.09	128.99	130.55	130.99	131.15	132.13	131.55
Japan ³	5098	5040	5061	5090	5196	5228	5326	5331	5313	5357	5376	5527
Canada	59.08	60.13	59.04	60.70	60.82	61.58	61.27	61.91	65.11	65.20	66.69	66.51
USA
Low sulphur fuel oil for industry ³ (Tax per metric ton)												
France	18.50	18.50	18.50	18.50	18.50	18.50	18.50	18.50	18.50	18.50	18.50	18.50
Germany	25.00	25.00	25.00	25.00	25.00	25.00	25.00	25.00	25.00	25.00	25.00	25.00
Italy	31.39	31.39	31.39	31.39	31.39	31.39	31.39	31.39	31.39	31.39	31.39	31.39
Spain	15.00	15.04	15.17	15.14	15.12	15.10	15.08	15.16	15.14	15.09	15.06	15.06
UK
Japan	2268	2346	2398	2477	2635	2636	2794	2689	2820	2873	3031	..
Canada
USA

¹ Unleaded premium (95 RON) for France, Germany, Italy, Spain, UK; regular unleaded for Canada, Japan and the United States.

² VAT excluded from prices for automotive diesel and low sulphur fuel oil when refunded to industry.

³ Kerosene for Japan.

* Taxes for France, Germany, Italy and Spain are in Euro; UK in British Pounds, Japan in Yen, Canada in Canadian Dollars



Average crude oil import costs (USD/barrel)

	France	Germany	Italy	Spain	UK	Japan	Canada	USA
1990	..	23.17	23.23	21.88	22.92	22.64	24.15	21.07
1991	..	20.36	19.14	18.50	20.06	20.14	20.83	18.23
1992	18.94	19.13	18.30	17.31	19.07	19.30	19.46	17.73
1993	16.05	16.88	15.87	15.13	16.58	17.47	17.19	15.87
1994	15.76	15.81	15.49	15.24	15.83	16.48	16.30	15.06
1995	17.14	17.07	16.90	16.96	17.29	18.02	17.76	16.74
1996	20.82	20.68	20.53	20.45	21.08	20.55	21.26	20.16
1997	18.99	19.01	18.88	18.34	19.32	20.55	20.59	18.34
1998	12.43	12.48	12.21	11.80	12.64	13.68	13.15	12.02
1999	17.45	17.51	17.10	16.99	18.01	17.38	17.85	17.06
2000	28.18	28.09	27.77	27.16	28.45	28.72	29.10	27.54
2001	24.13	24.15	23.87	23.32	24.45	25.01	24.87	22.07
2002	24.63	24.40	24.34	23.95	24.58	24.96	24.97	23.52
2003	28.87	28.44	28.58	28.13	29.13	29.26	29.53	27.66
2004	37.61	36.65	36.60	36.03	37.75	36.59	38.13	35.86
2005	52.74	52.30	51.33	50.54	53.79	51.57	52.37	48.82
2006	63.69	63.29	62.50	60.99	65.00	64.03	64.33	59.15
2007	72.22	71.60	70.20	68.66	73.80	70.09	70.04	66.77
2008	97.63	96.70	96.67	94.86	99.34	100.98	101.41	94.97
2009	61.64	61.18	60.69	59.78	62.39	61.29	60.29	58.82
4Q2006	58.65	58.19	57.74	56.63	59.64	60.04	59.67	53.69
1Q2007	57.33	56.78	55.34	51.88	57.85	57.55	56.94	53.43
2Q2007	67.75	67.33	66.22	65.60	69.22	65.80	65.43	61.85
3Q2007	74.39	74.39	72.94	72.08	75.89	71.55	73.60	70.09
4Q2007	88.20	87.81	86.36	85.74	89.41	84.76	86.45	81.38
1Q2008	96.82	96.60	94.75	94.62	98.59	93.46	94.48	89.73
2Q2008	120.27	120.25	117.89	117.72	123.03	113.26	116.89	114.21
3Q2008	116.03	115.67	115.09	112.67	116.55	126.94	119.85	115.80
4Q2008	58.49	56.42	57.91	55.77	57.25	69.72	70.31	57.13
1Q2009	44.66	44.24	42.80	42.83	44.57	44.23	42.36	40.38
2Q2009	58.94	57.90	56.96	56.97	59.01	55.07	56.27	56.52
3Q2009	69.20	68.55	68.42	67.54	69.34	70.84	68.89	66.61
4Q2009	75.13	74.69	74.33	74.19	75.50	75.63	74.22	72.78
Dec-07	91.38	90.74	90.53	88.96	92.82	91.37	91.73	83.73
Jan-08	93.62	92.13	91.11	90.56	93.59	91.18	92.22	85.97
Feb-08	94.79	94.34	92.22	92.72	96.26	93.06	92.35	87.25
Mar-08	102.68	102.64	100.96	101.28	103.87	96.15	100.50	95.96
Apr-08	108.78	108.19	106.02	105.69	110.82	104.18	104.04	104.38
May-08	120.85	121.94	119.10	119.74	123.52	112.08	114.58	114.18
Jun-08	131.20	131.81	129.05	128.37	133.47	126.39	129.90	124.19
Jul-08	133.34	131.54	131.37	130.14	135.44	133.46	133.99	128.10
Aug-08	113.74	114.19	113.39	109.56	115.96	132.10	122.57	116.35
Sep-08	98.99	98.23	99.86	98.53	100.84	114.25	104.58	100.79
Oct-08	73.69	74.55	75.38	73.60	76.08	92.25	90.02	76.68
Nov-08	55.69	54.81	56.45	52.61	55.50	68.73	63.14	52.90
Dec-08	43.64	40.88	42.91	42.40	41.59	49.87	48.41	40.18
Jan-09	42.97	42.79	41.17	41.76	41.78	42.62	39.10	37.24
Feb-09	44.10	43.42	42.20	42.27	44.70	44.84	42.31	38.87
Mar-09	46.74	46.25	45.08	44.53	47.10	45.20	46.48	44.59
Apr-09	52.36	49.42	49.39	50.12	50.99	48.55	48.42	49.23
May-09	57.55	56.81	55.70	55.90	57.34	54.07	54.22	55.63
Jun-09	66.84	67.33	65.96	64.36	67.82	63.26	65.05	64.71
Jul-09	66.47	65.71	64.57	64.24	66.03	70.64	66.61	63.72
Aug-09	71.93	72.47	71.86	69.21	73.06	68.99	70.24	67.92
Sep-09	69.57	67.77	68.78	69.20	69.22	73.15	70.58	68.19
Oct-09	72.55	72.45	71.07	71.68	73.31	70.79	70.08	70.78
Nov-09	77.39	76.81	76.52	75.28	77.83	76.37	75.02	74.46
Dec-09	75.76	74.77	75.44	75.71	75.12	79.30	76.79	73.02